

### Area Breakdown

Area 1 – Blaengwrach, Crynant, Glynneath, Onllwyn, Seven Sisters, Resolven

Area 2 – Alltwen, Rhos, Cwmllynfell, Godregraig, Gwaun Cae Gurwen, Lower Brynamman, Pontardawe, Trebanos, Ystalyfera

Area 3 – Briton Ferry East, Briton Ferry West, Cimla, Neath East, Neath North, Neath South, Tonna

Area 4 – Aberdulais, Bryncoch North, Bryncoch South, Cadoxton, Coedffranc Central, Coedffranc North, Coedffranc West, Dyffryn

Area 5 – Cymmer, Glyncorrwg, Gwynfi, Bryn & Cwmavon, Pelenna, Port Talbot, Taibach, Margam

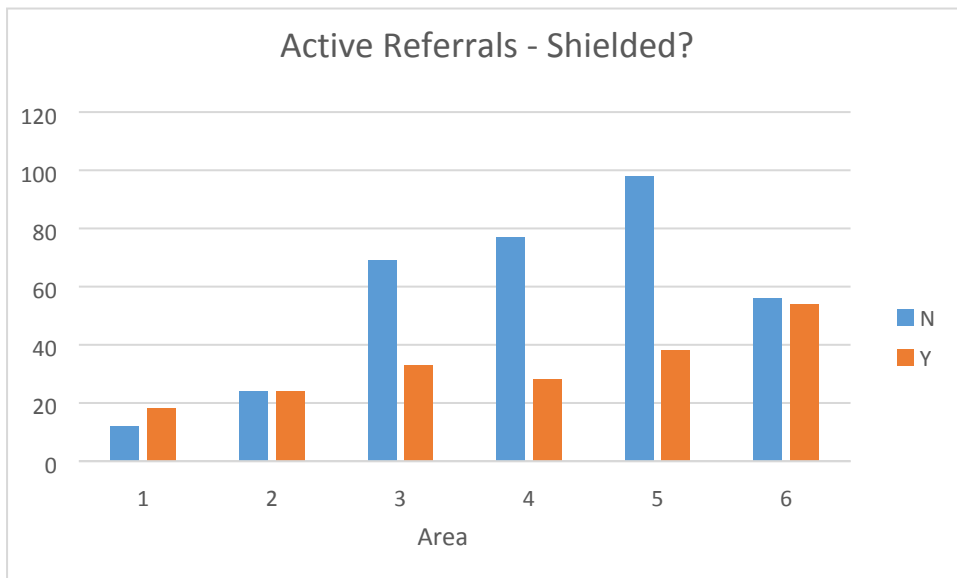
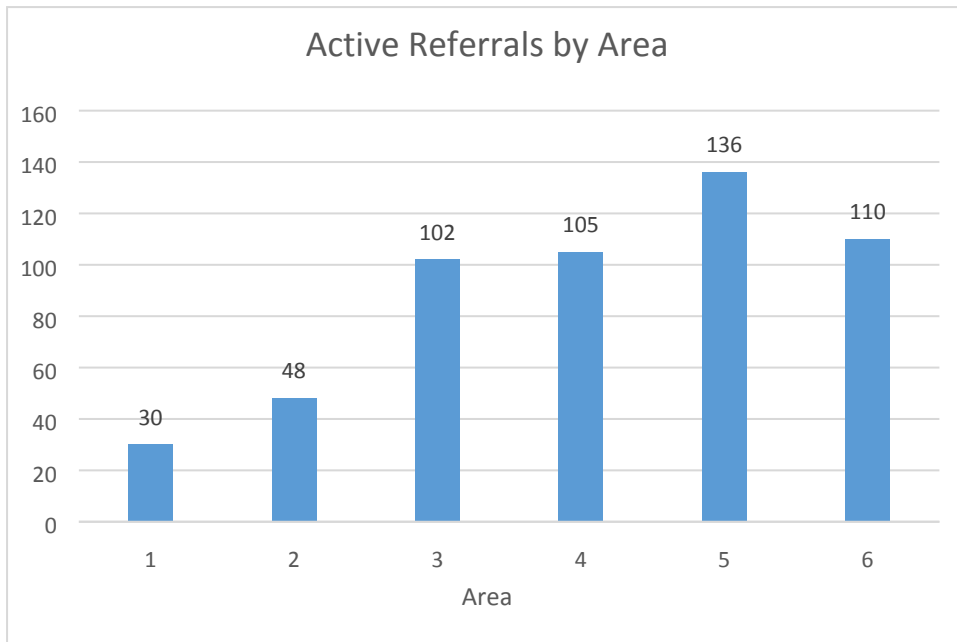
Area 6 – Baglan, Aberafan, Sandfields East, Sandfields West

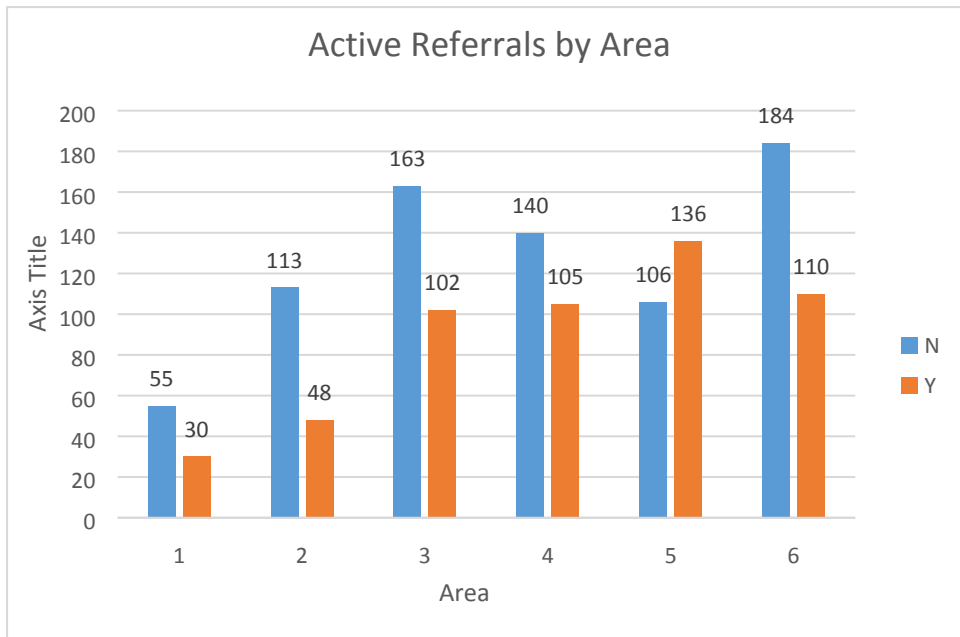
**Total Number of Referrals by Ward and if Shielded**

<b>Ward</b>	<b>Shielded Property</b>		<b>Total</b>
	<b>No</b>	<b>Yes</b>	
ABERAVON	36	15	51
ABERDULAIS	18	2	20
ALLTWEN	7	6	13
BAGLAN	54	20	74
BLAENGWACH	9	2	11
BRITON FERRY EAST	19	5	24
BRITON FERRY WEST	18	7	25
BRYN & CWMAVON	32	8	40
BRYNCOCH NORTH	11	2	13
BRYNCOCH SOUTH	66	13	79
CADOXTON	12	3	15
CIMLA	17	11	28
COEDFFRANC CENTRAL	23	7	30
COEDFFRANC NORTH	11	12	23
COEDFFRANC WEST	13	8	21
CRYNANT	12	2	14
CWMLLYNFELL	6	1	7
CYMMER	45	14	59
DYFFRYN	36	8	44
GLYNCORRWG	2		2
GLYNNEATH	12	11	23
GODREGRAIG	9	1	10
GWAUN-CAE-GURWEN	15	8	23
GWYNFI	5	3	8
LOWER BRYNAMMAN	6	1	7
MARGAM	14	6	20
NEATH EAST	44	21	65
NEATH NORTH	35	9	44
NEATH SOUTH	36	20	56
ONLLWYN	6	4	10
PELENNNA	6	1	7
PONTARDAWE	40	13	53
PORT TALBOT	39	20	59
RESOLVEN	7	10	17
RHOS	16	7	23
SANDFIELDS EAST	57	21	78
SANDFIELDS WEST	61	30	91
SEVEN SISTERS	9	1	10
TAIBACH	40	7	47
TONNA	20	3	23
TREBANOS	5	4	9
YSTALYFERA	9	7	16
<b>Grand Total</b>	<b>938</b>	<b>354</b>	<b>1292</b>

About 400 residents have received volunteer support from either S&W or community based services/local members.

Since 30<sup>th</sup> April – notes added to 776 referrals about food orders, 288 still open





The above and below graphs show no. active (orange) and no. closed, i.e. not active (blue).

